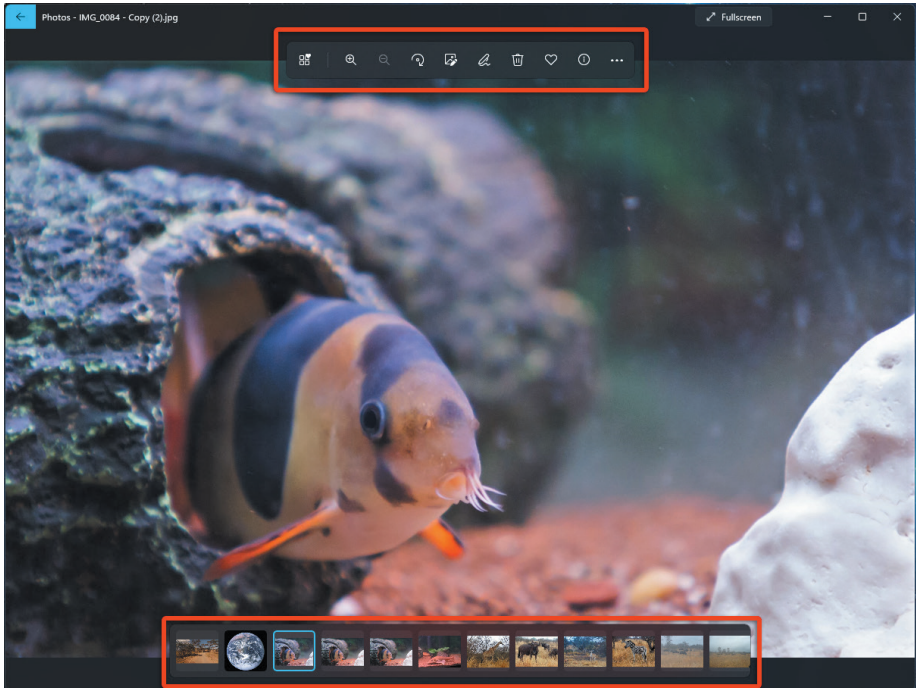


Legacy Photos App

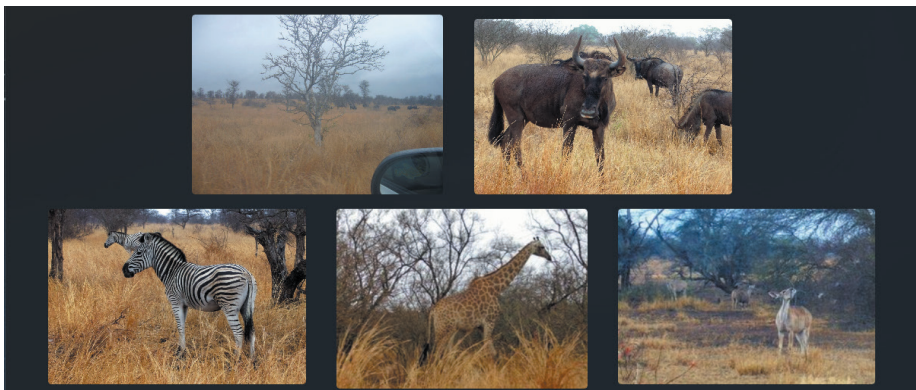
Windows 11

Legacy Photos App

With Windows 11, Microsoft has updated the Photos app with a few user interface improvements. The app still looks very similar to previous version, however there are a few differences. You'll see a new photo editing toolbar appear along the top of your photo, as well as a film-strip along the bottom showing photos from the same album or folder.

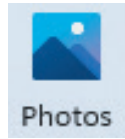


You'll also see a new multi-view feature that allows you to compare photos, or see multiple photos in the same window.

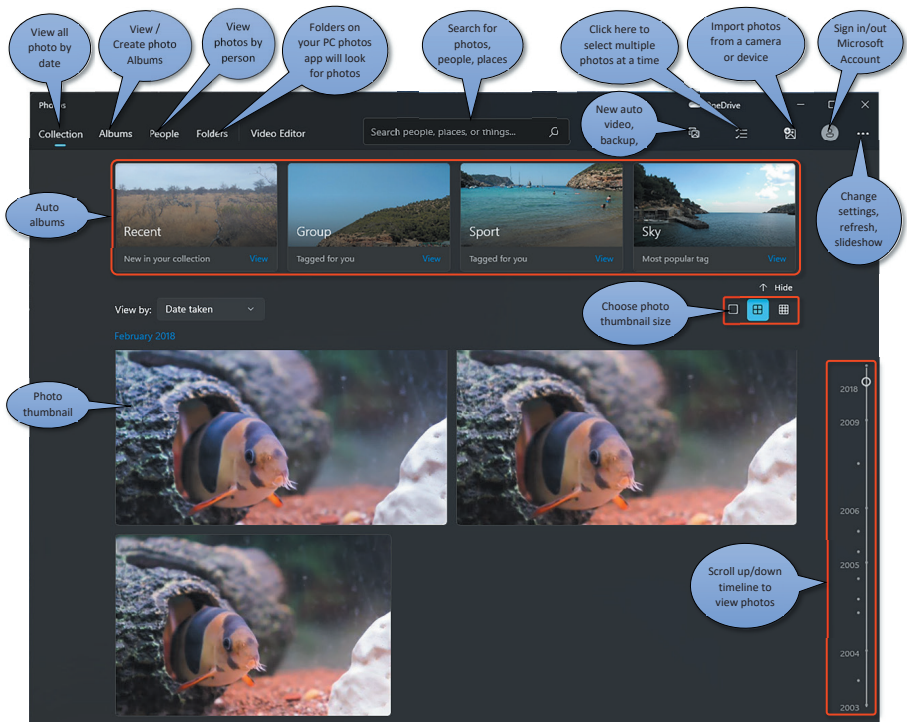


Legacy Photos App

To open the photos app, click on the photos icon on your start menu.



When you start the app, you'll land on the home screen. Let's take a look.



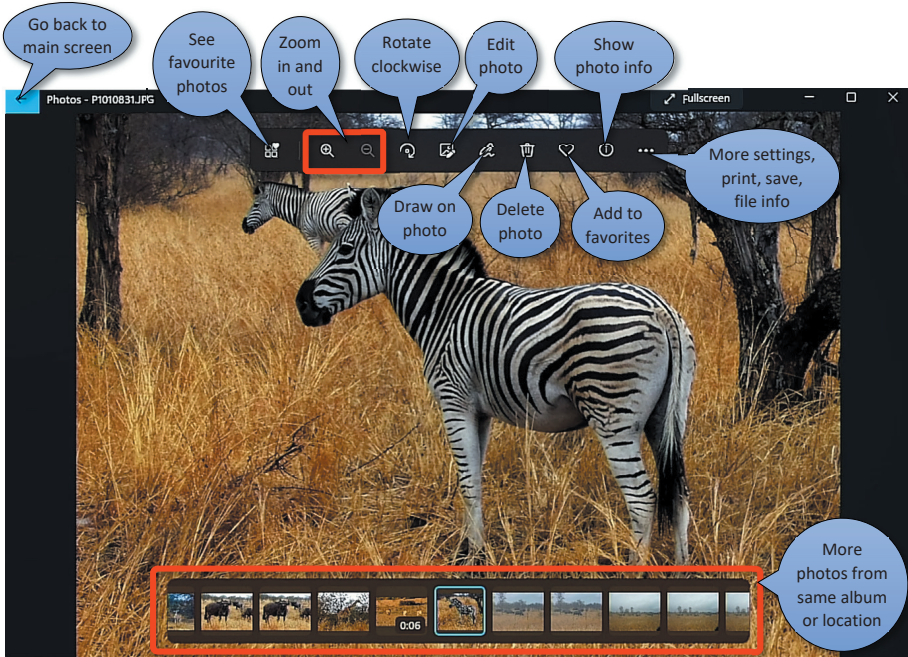
View a Photo

To view a photo, tap or click on the image thumbnail, this will open the image in view mode.



Legacy Photos App

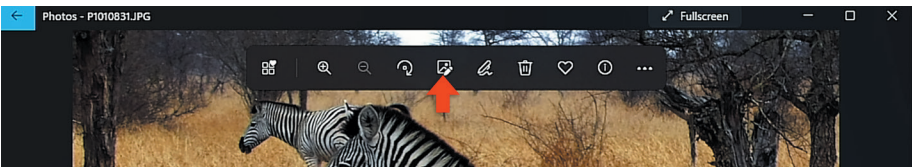
In view mode, you'll see the photo you selected appear full screen. Along the top of the photo you'll see a toolbar with some options



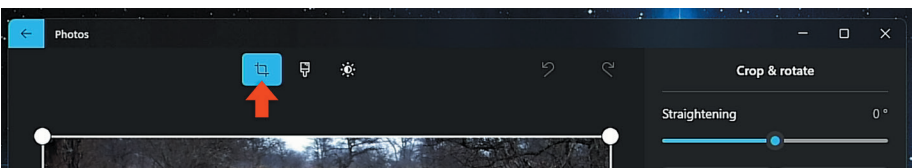
Along the bottom you'll see a film strip with photos from the same album or location.

Crop & Straighten a Photo

Open your photo in 'view mode' as shown on page 3, then select the edit icon from the toolbar.

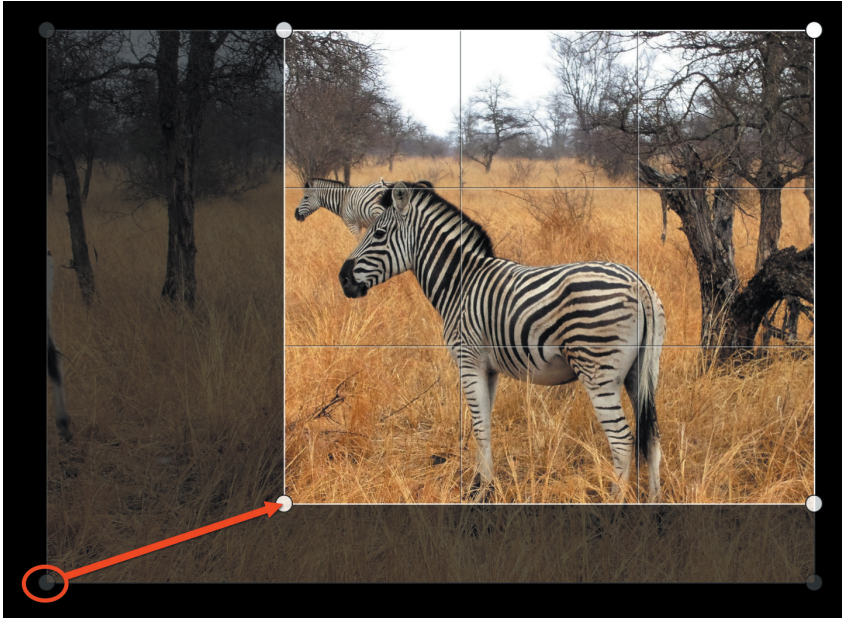


Select the crop icon.

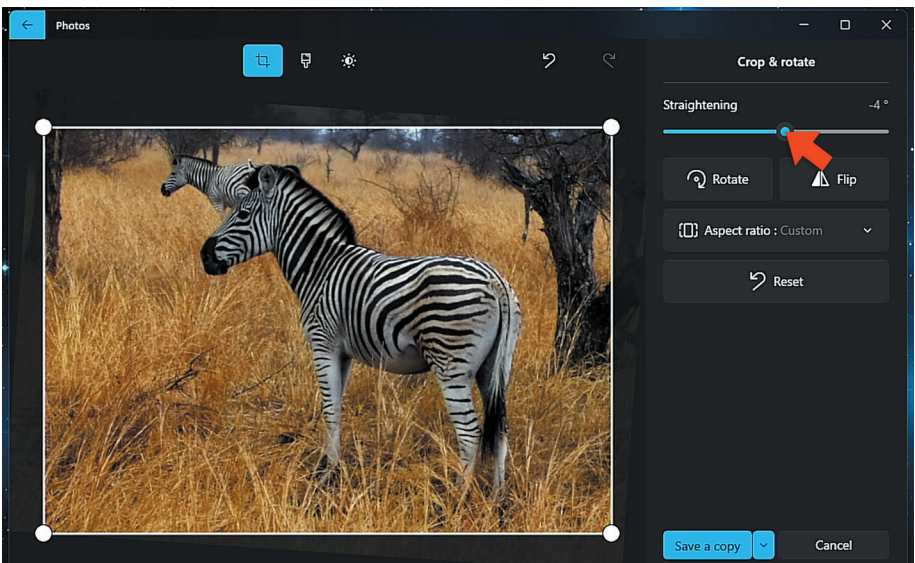


Legacy Photos App

If I wanted to crop my zebra photo, you'll see a box around the photo with four white dots on each corner. These are called crop handles.. Click and drag the white dots to resize the box so it surrounds the part of the photo you want to keep, as shown below.



To straighten the photo, click and drag the slider.

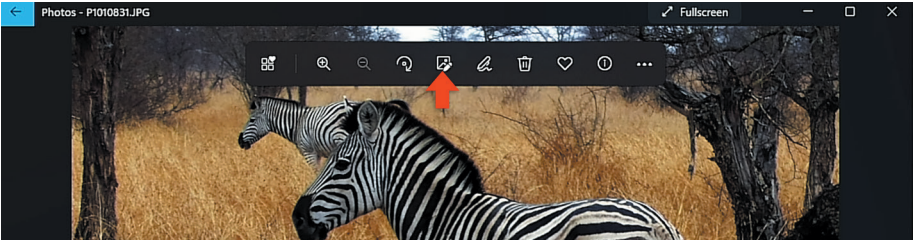


Click 'save a copy' when you're done.

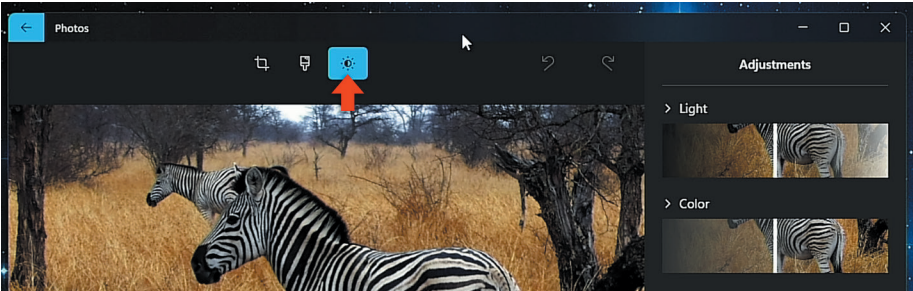
Legacy Photos App

Adjusting Brightness & Colour

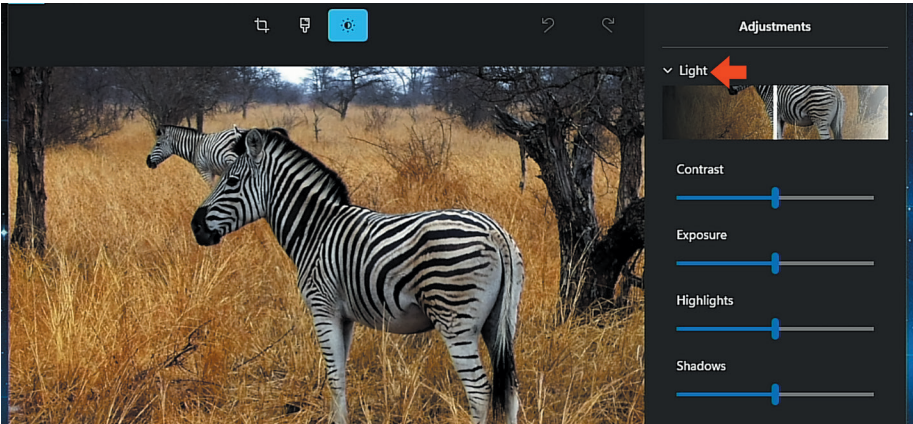
Open your photo in 'view mode' as shown on page 3, then select the edit icon from the toolbar.



Select adjustments icon at the top of the screen.



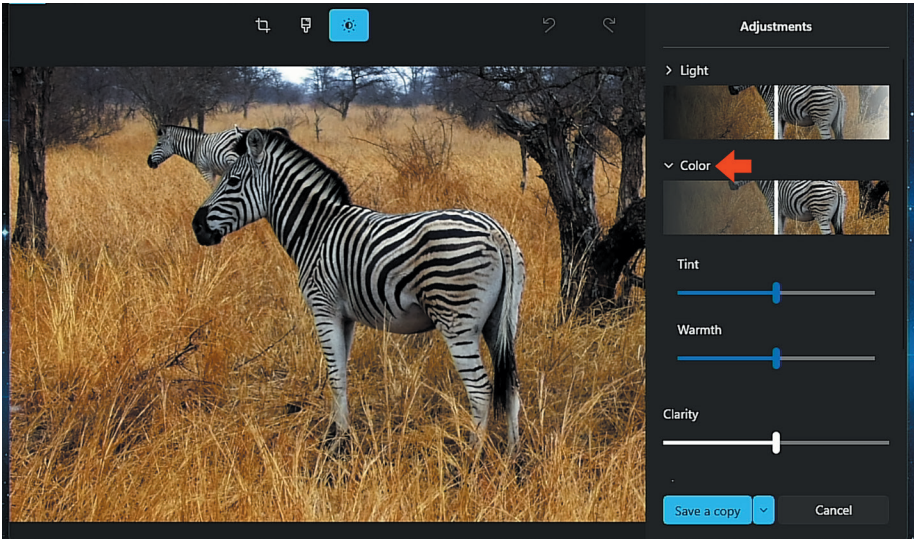
A panel will open up on the right hand side. Click 'light' to reveal the brightness, exposure and contrast settings.



You'll see four sliders appear. Drag the sliders left or right to adjust the contrast, the overall brightness (or exposure), highlights (ie the bright parts of the image such as the sky), and the shadows (ie the dark parts of the image).

Legacy Photos App

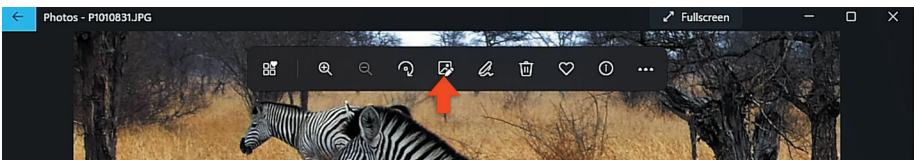
Now click 'color'. This will allow you to correct the white balance of the photograph (the warmth). Drag the slider to the left to make the image cooler (more blue), or to the right to make the image warmer (more orange).



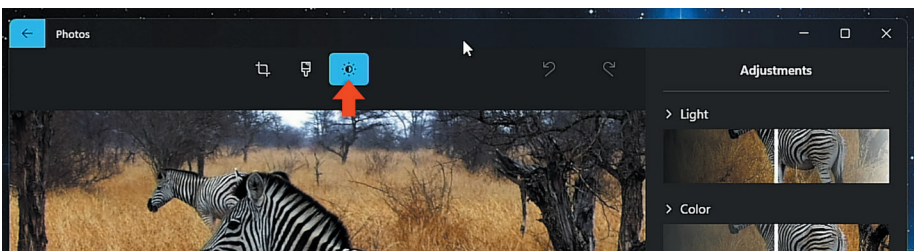
Click 'save a copy', when you're done.

Spot Fix

The spot fix brush allows you to correct small blemishes on your photograph. To use the spot fix brush, open your photo in 'view mode' as shown on page 3, then select the edit icon from the toolbar.

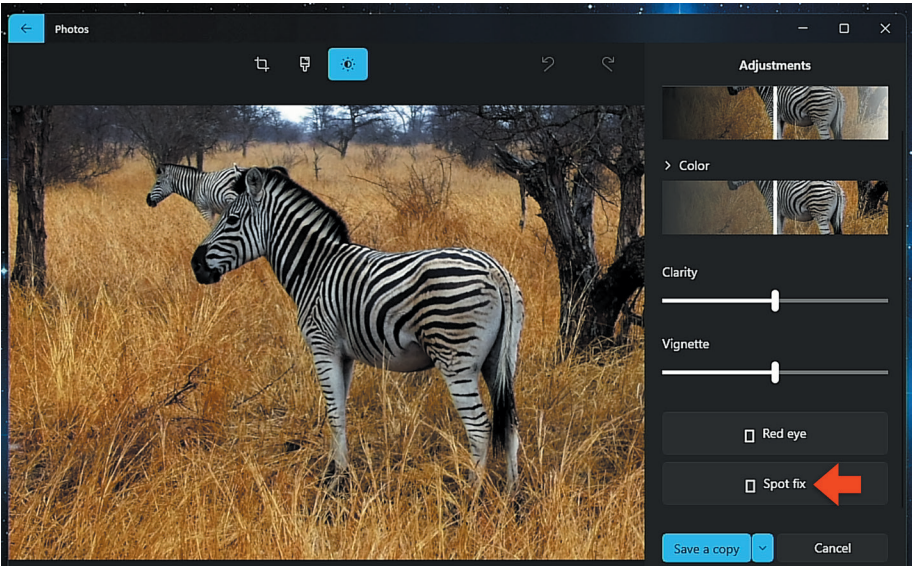


Select adjustments icon at the top of the screen.

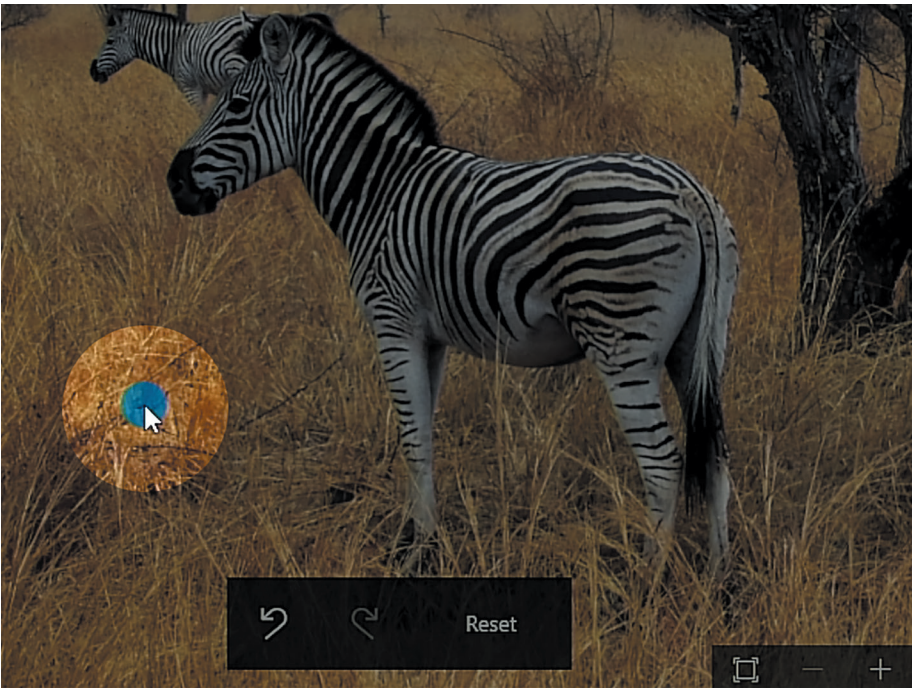


Legacy Photos App

Scroll down the panel on the right hand side, select 'spot fix'.



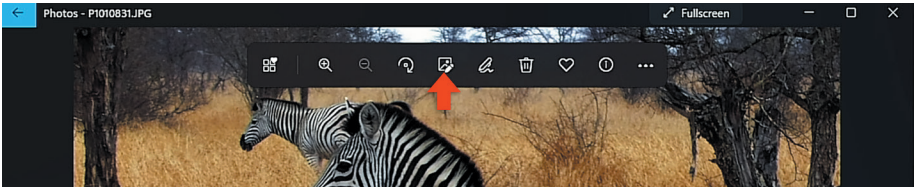
With the brush, click on the area of the image you want to fix.



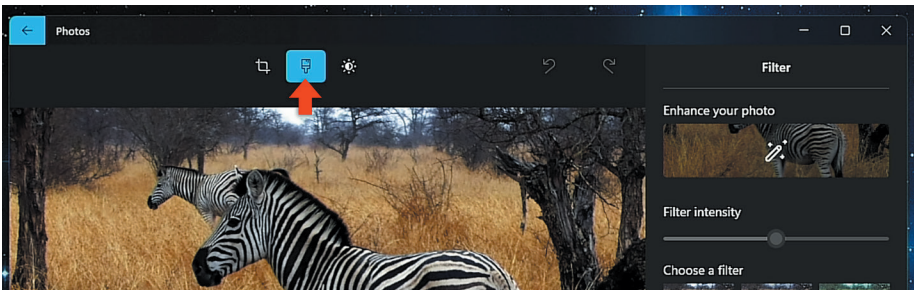
Click 'save a copy' when you're done

Adding Filters

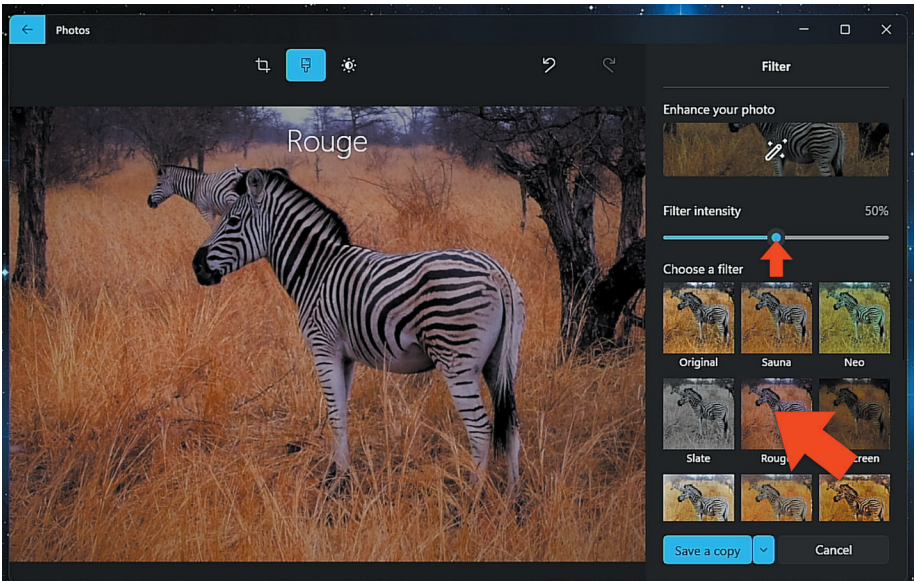
Open your photo in 'view mode' as shown on page 3, then select the edit icon from the toolbar.



Select filters icon at the top of the screen.



From the panel on the select a filter. Use the 'filter intensity' slider to increase or decrease how much the filter affects the photo.

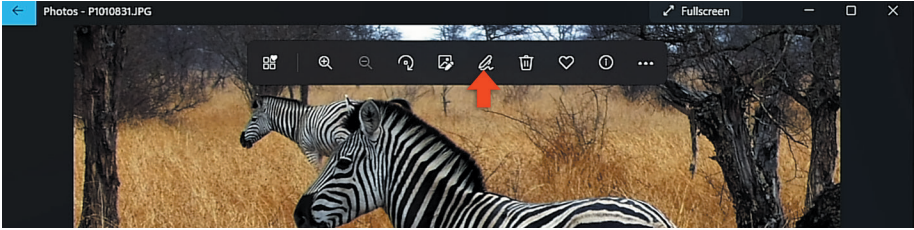


Click 'save a copy' when you're done.

Legacy Photos App

Annotating Photos

If you have a device with a touch screen, you can use your pen or finger to draw on the photo. To do this open your photo in 'view mode' as shown on page 3, then select the annotate icon from the toolbar.



Draw with your pen or finger to annotate your photograph.



Along the top of your screen you'll see a tool bar. You can select from three different writing tools: a pen, a pencil, and a calligraphy pen.

The next icon along is an eraser. This allows you to use your pen or finger to rub out parts of your drawing.

You can also save photos with your annotations using save icon.

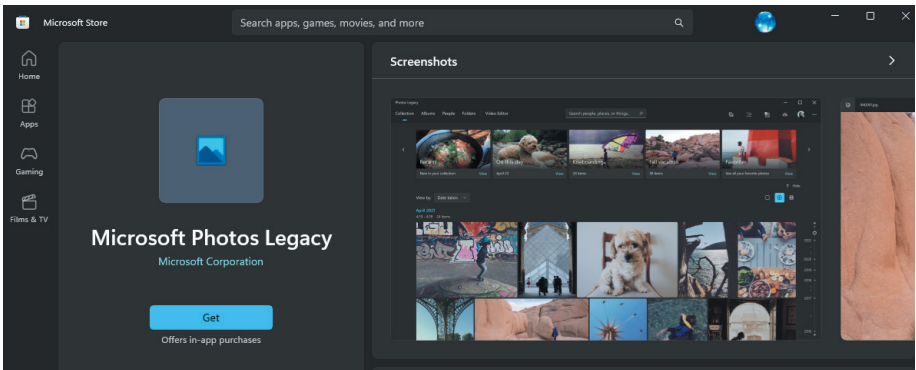
Video Editor

The Video Editor, allows you to quickly blend 3D effects, photos, and videos together into a video clip that you can share on social media, send to a friend, or use to promote an idea.

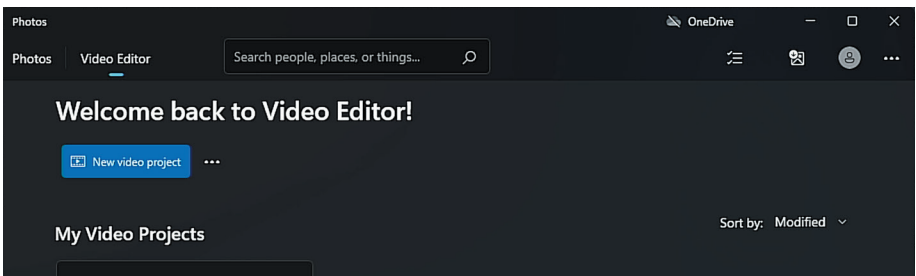
To start video editor, open your start menu, click 'all apps', then scroll down and select 'video editor'. From the popup, select 'get photos legacy'.



From the page in the Microsoft Store, click 'get'.



Once the app has download, go back to your start menu, select 'all apps', scroll down then click on 'photos legacy'.



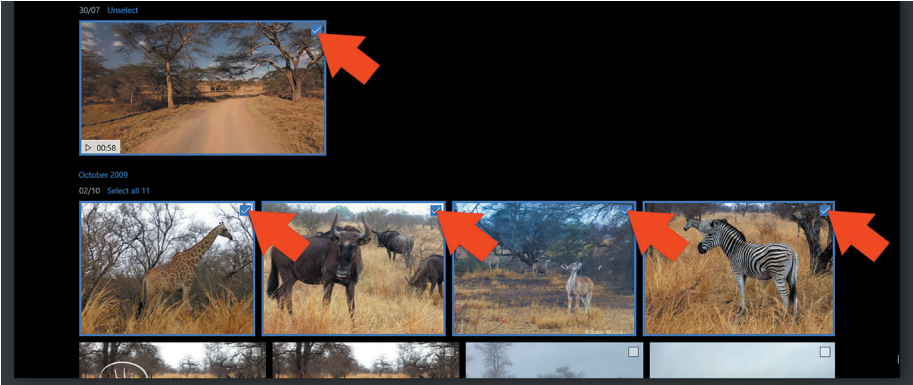
You'll see a list of video projects you've previously created.

To start a new project, click 'new video project' at the top of the screen.

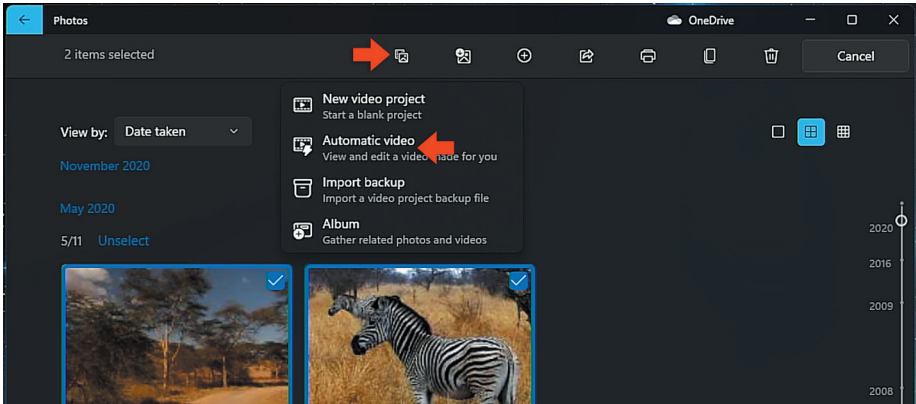
Legacy Photos App

Creating Videos Automatically

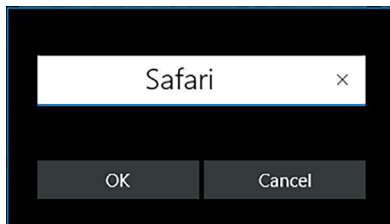
Click the photos/videos you want to include in your video. Hover your mouse over the top right corner of the image and click the tick box. Do this on all the images/videos you want to include.



Click 'new video' on the toolbar at the top of the screen, then select 'automatic video' from the drop down menu.



Type in a name for your video.

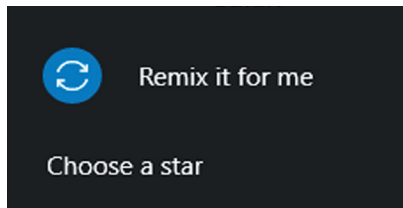


Click 'ok'

When it's finished, you'll be able to see a preview of the video remix has created..



If you don't like the style, you can click the 'remix it for me' button and Photos App will generate a new video.

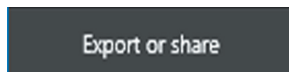


If you have any people in your video, an image of them will appear for you to select. Click 'choose a star' and select the main people in the video. This highlights them in the video.

To make any custom changes just click 'edit video' on the bottom right. This will take you to the custom edit screen where you can make changes to your video.



If you're happy with the results, click 'export or share'.



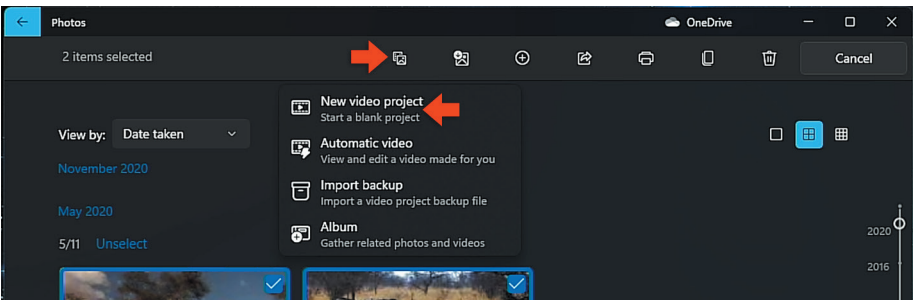
Legacy Photos App

Creating Videos

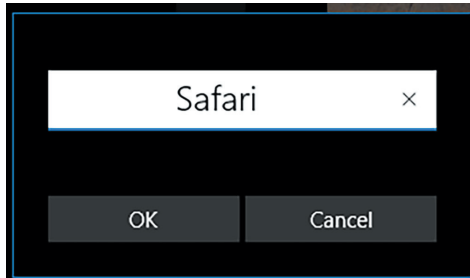
To create a video, click the photos/videos you want to include in your video.



Click 'new video' on the toolbar at the top of the screen, then select 'new video project' from the drop down menu that appears.



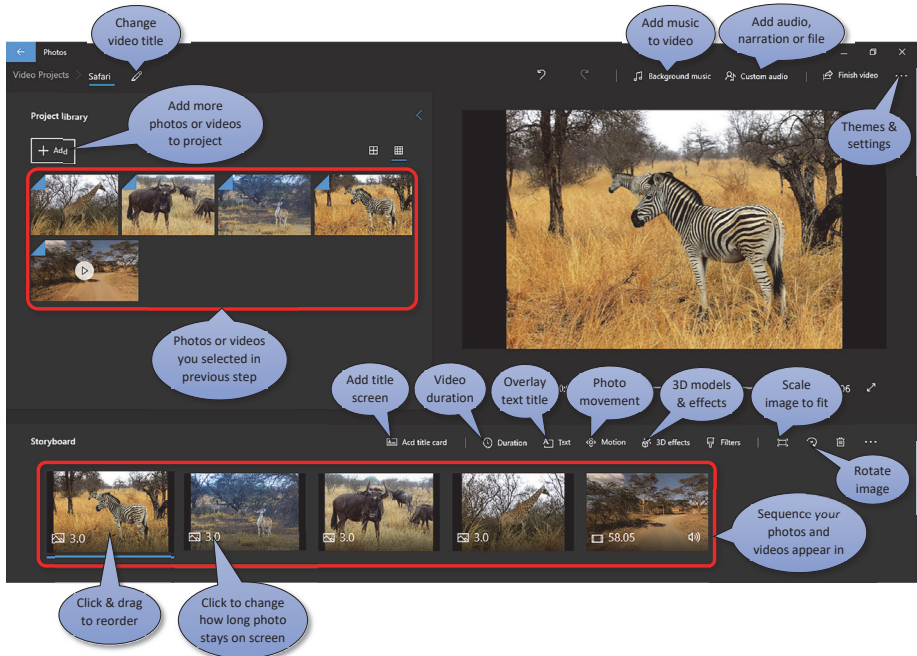
Type in a name for your video.



Click 'ok'

Legacy Photos App

You'll see the main editing screen. Lets take a look at the different parts.



Top left, you'll see all the photos and videos you selected in the previous step. On the top right you'll see some icons to add themes, music, audio files, narrations, as well as an export feature so you can share your creations.

Underneath that on the right hand side you'll see a large preview screen. This is a preview of your video. You can scrub through it using the progress bar underneath.

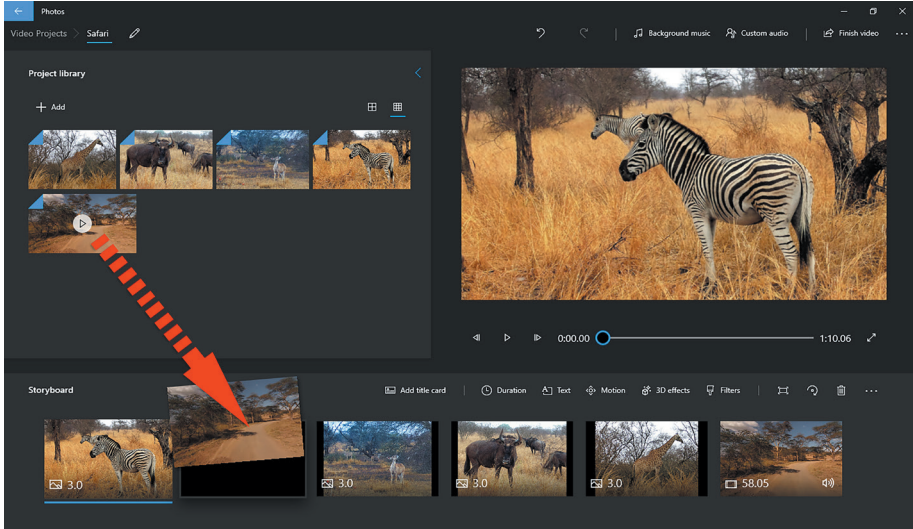
Along the bottom is your storyboard or timeline. This is the sequence of photos and videos that will make up your video.

Along the top of the storyboard are some icons that allow you to add a title screen, photo filters, add text overlay titles, motion effects and some 3D effects. These help to make your video more interesting for viewers to watch.

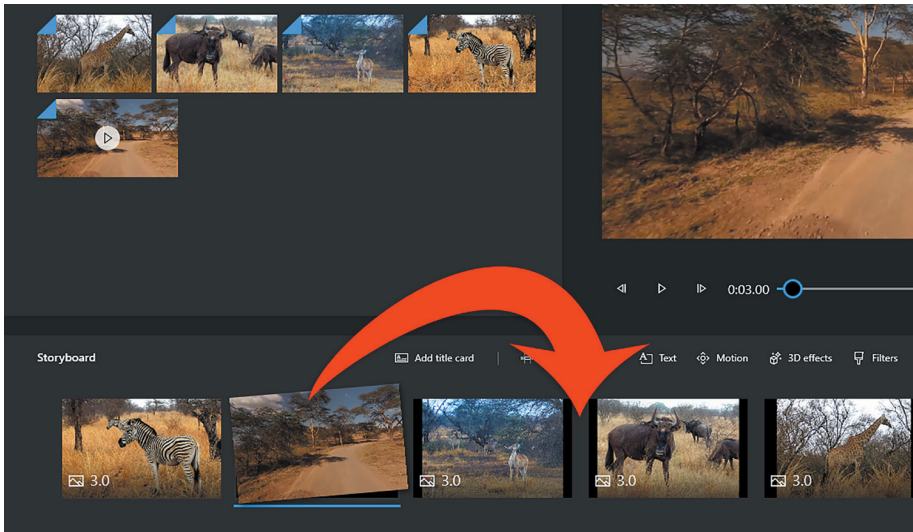
Legacy Photos App

Add and Arrange your Media

On the top left, you'll see all the photographs and videos you added at the beginning. You can drag and drop these onto the storyboard along the bottom of the screen.



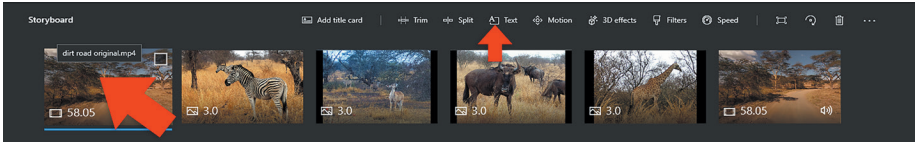
Along the bottom, you'll see the order of photos/videos you have added. To reorder these, drag them across to the position in the sequence you want them.



Click the numbers on the bottom of each thumbnail on the storyboard to change the duration of each photo/video

Add Text Titles

You can add text to your video. First, select the photo or video you want the text to appear. Then select 'text' from the bar along the top of the storyboard.

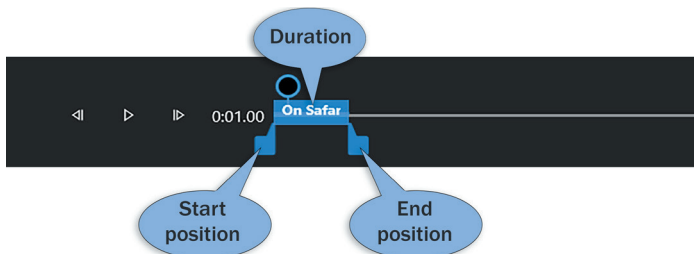


Select a template from the bottom right (I'm going to choose 'adventure'). Type your title into the text field on the top right.



Under layout on the bottom right, select where you want the text to appear: centre, top, left...

Move the two blue markers to indicate where you want the effect to start and finish, and how long you want the effect to stay on the screen for.

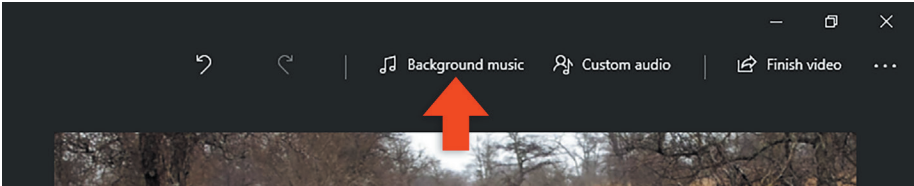


Click 'done' on the bottom right when you're finished.

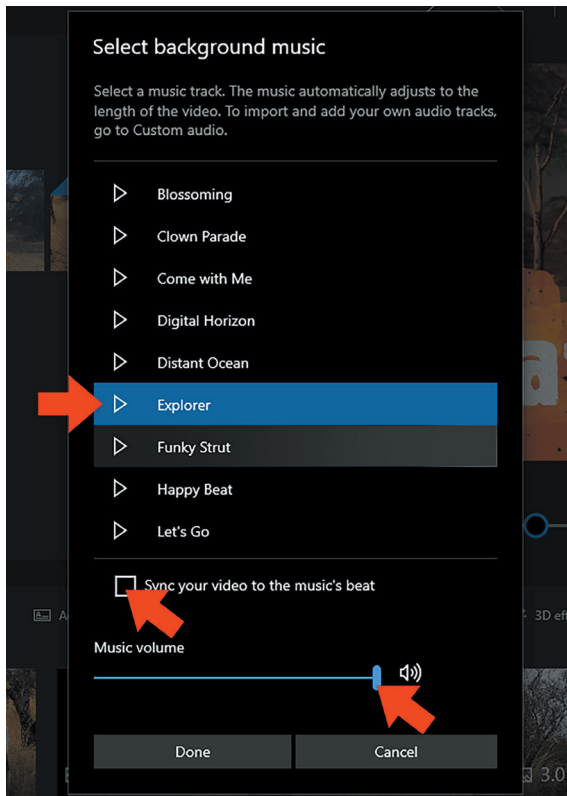
Legacy Photos App

Add Music

Now, how about some music. Select the 'background music' option on the top right of the screen.



I'm going to use the 'explorer' music - seems appropriate. From the popup window select 'explorer'. *To hear a preview of the music, click the small triangle icon next to the name.*



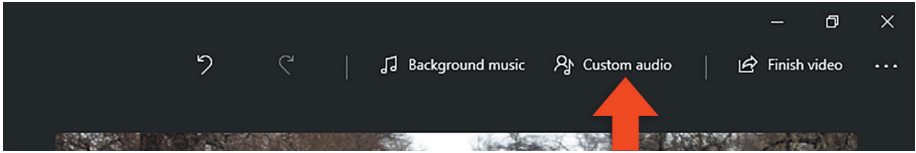
Select 'sync your video to the music beat'. This will cut your video in time with the music.

Set the music volume using the slider.

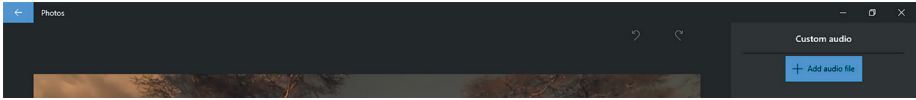
Click 'done'.

Add Audio File

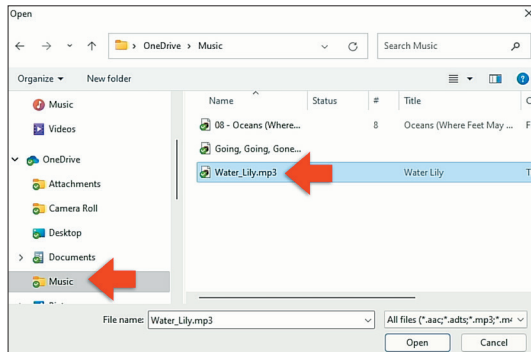
You can also add your own music, narration, or audio file. Click on 'custom audio'.



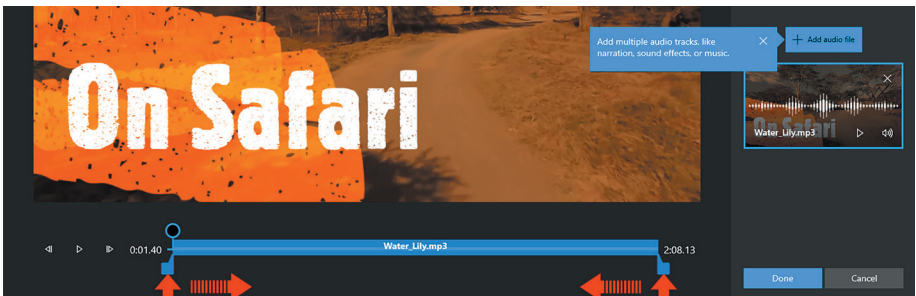
Click 'add audio file' on the top right.



Navigate to your music folder on your computer - this is usually called 'music' and select a track.



Move the blue markers to mark the beginning and end of the audio



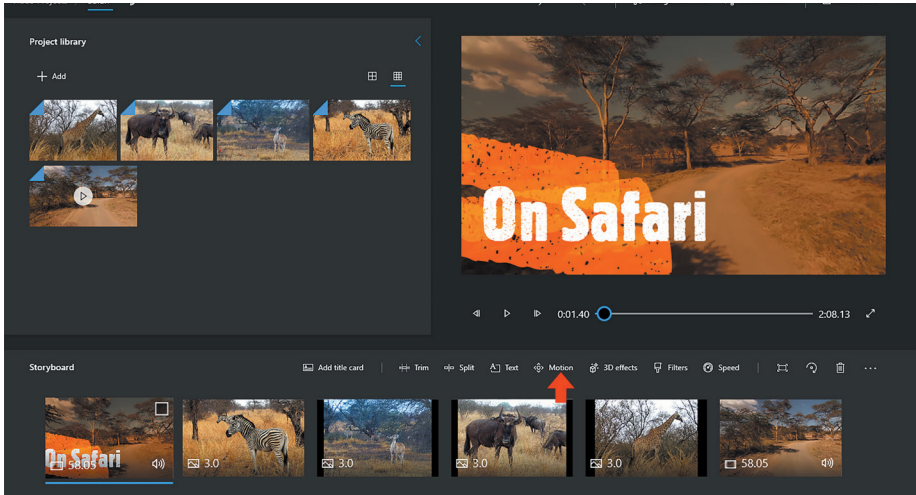
If you want to add another file, click 'add audio file' again, and select the file.

Click 'done' when your happy.

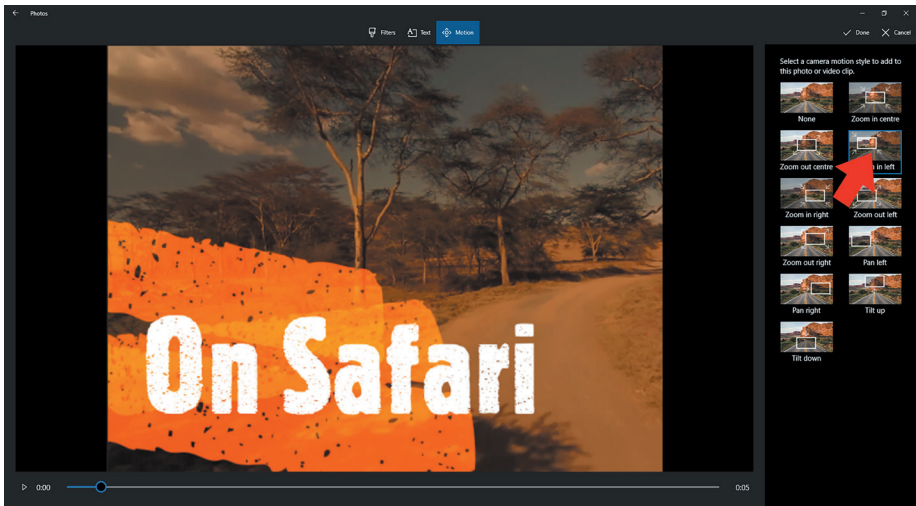
Legacy Photos App

Slideshow Motion

To change the motion of your photographs in your slideshow, select the photo slide you want to change.



Now select a motion style from the options on the right hand side of the screen

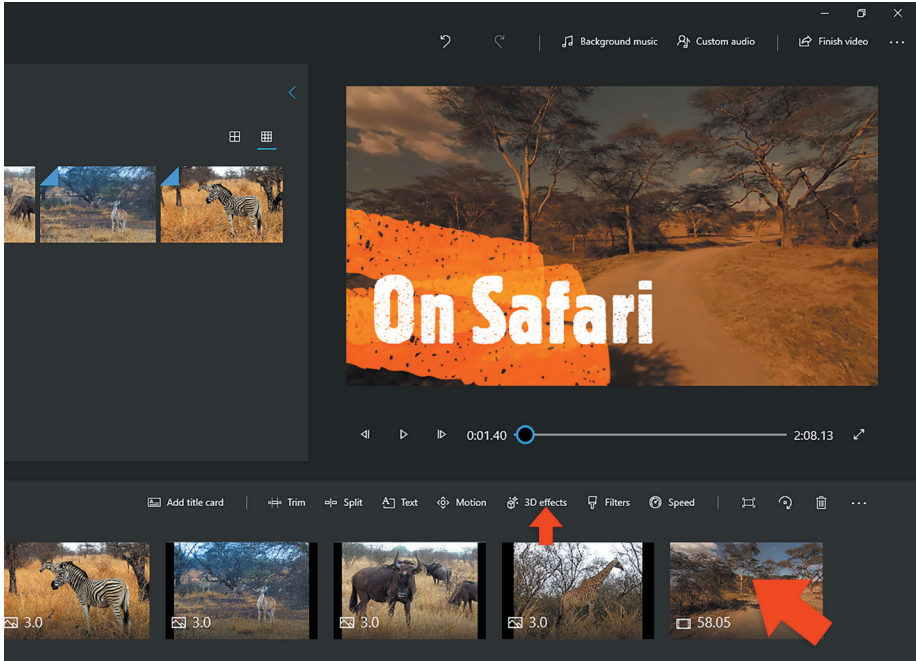


Here you can select 'zoom in right', which will slow zoom into the right hand side of the image; or 'zoom in left' zooms into the left hand side of the image. These are useful if the subject in the photograph is on the left or right hand side of the image - helps draw attention to your subject. You can also pan across the image or zoom into the centre.

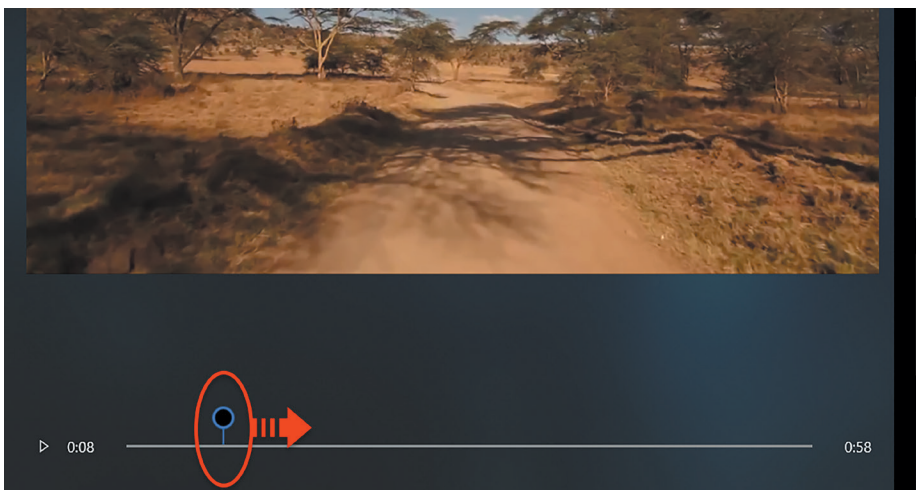
3D Effects

3D effects can only be added to video clips not still photographs. If you select a still photograph, the 3D effects button will be greyed out.

Click '3D Effects'.

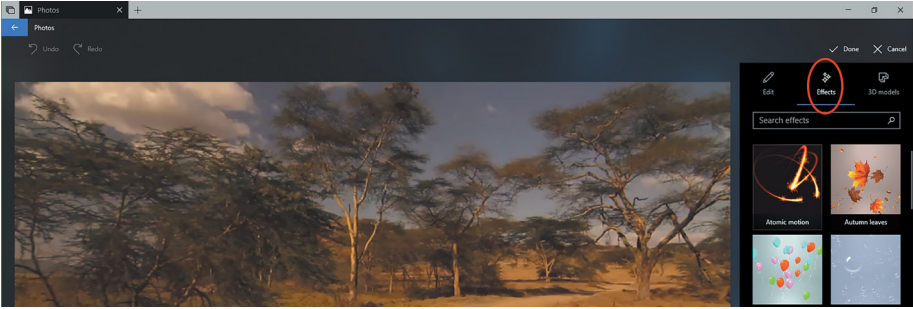


Scrub to the part of the footage you want the effect to appear, using the progress bar underneath your video preview.



Legacy Photos App

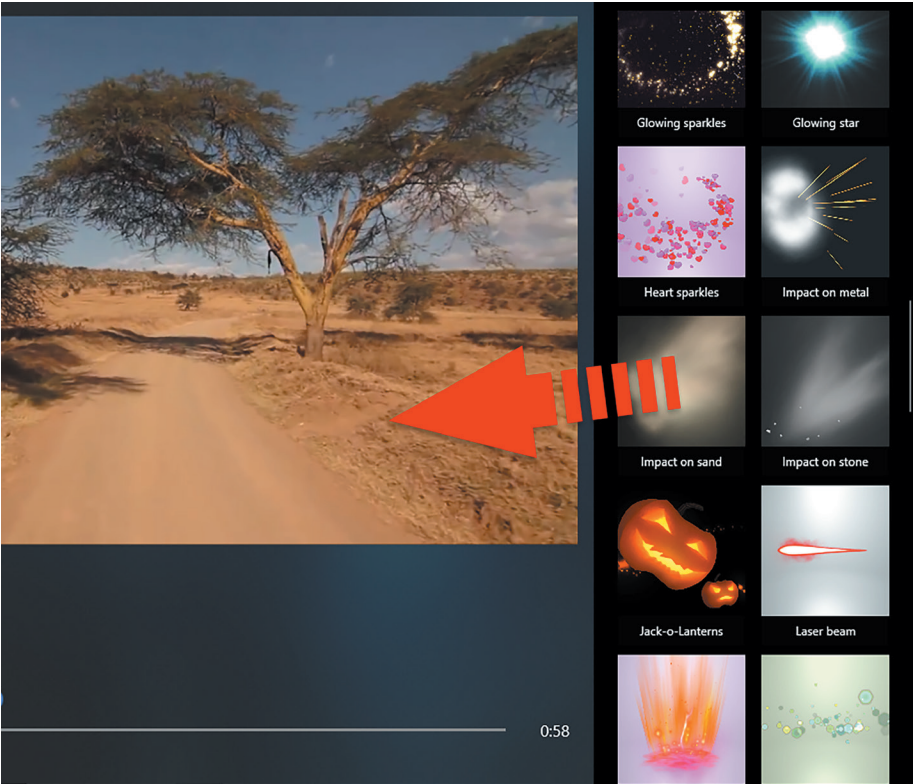
Select the 'effects' icon on the top right to reveal the effects panel, if they are not visible.



Browse through the effects listed down the right hand side of the screen.

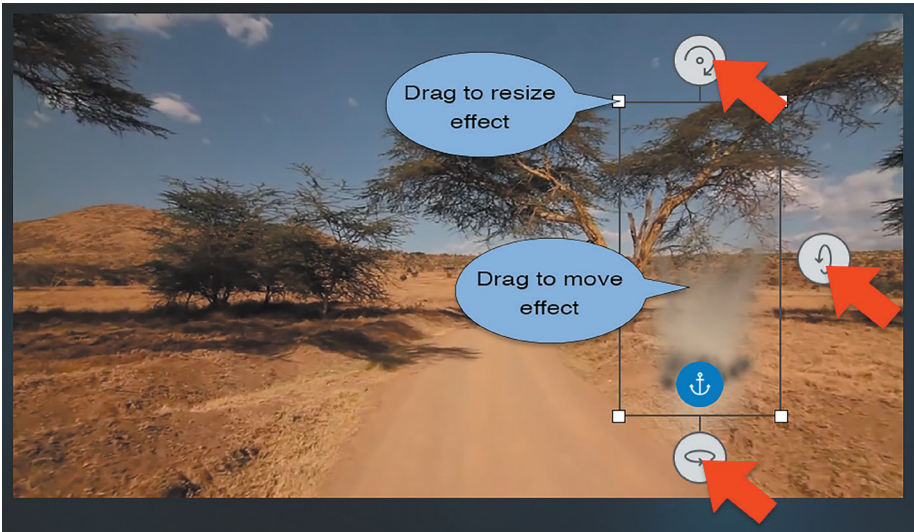
Drag and drop the effect onto the position you want the effect to appear in the video.

In this example, I want the “impact on sand” effect to appear to the right of the dirt road.

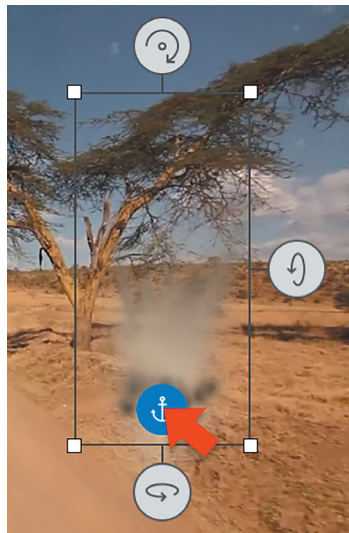
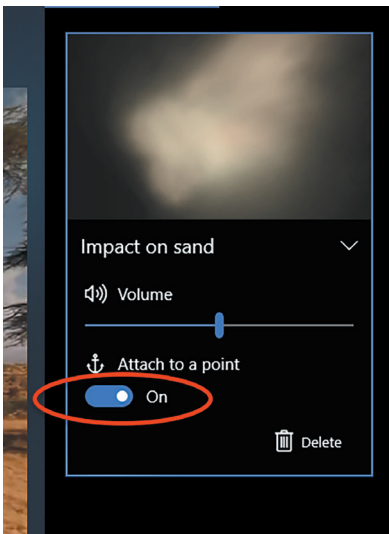


Legacy Photos App

You can rotate the effect around the frame using the tree axis handles indicated with the arrows below. You can move the effect by moving the surrounding grey box and you can resize the effect using the square resize handles on the corners of the resize box.



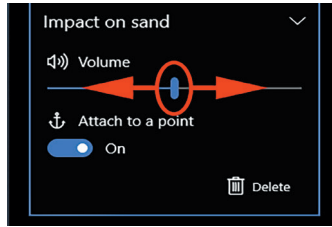
Now to make the 3D effect more realistic, you can anchor it to a position in the video clip. Turn 'anchor to a point' to the on position.



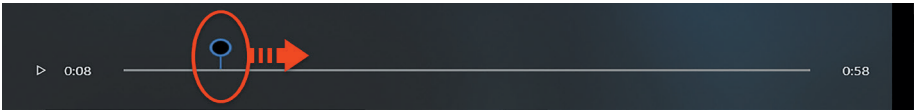
Make sure the blue anchor on the effect is in the position you want the effect anchored to. When you play the video, the effect will stay in that position even if the camera moves.

Legacy Photos App

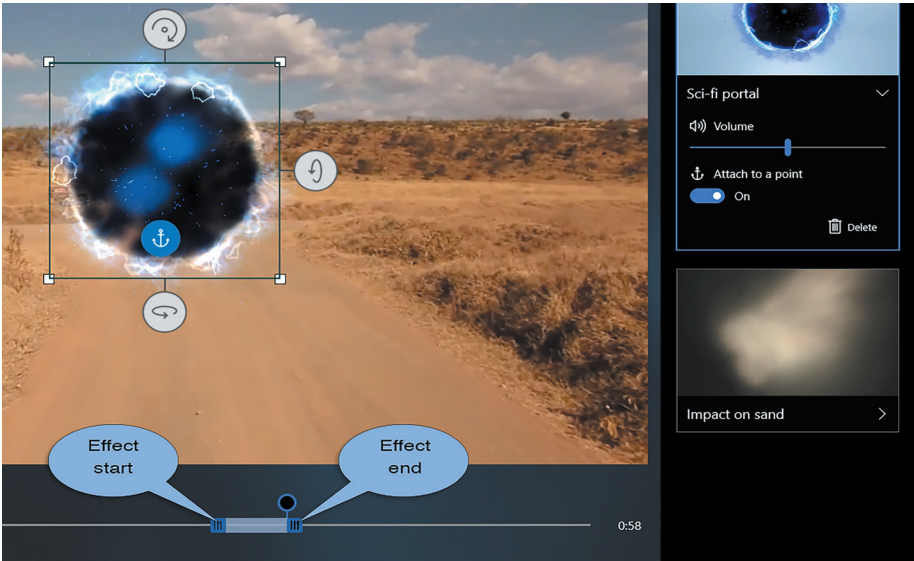
Some of the effects have sound. You can adjust this using the volume control in the panel on the right hand side



Add more effects if you want to using the drag and drop method described earlier.



You can also add effects to other parts of the clip. Scrub across your clip using the progress bar, as before. Lets add a portal.

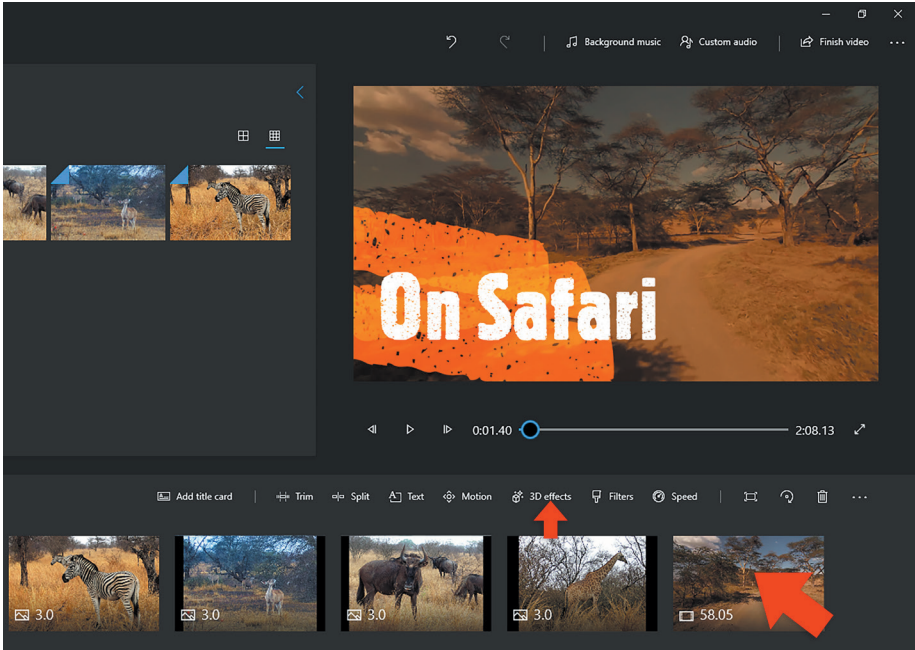


Notice below on the progress bar, you'll see a range bar appear. This will allow to adjust the duration of the effect. To adjust the range, click and drag the start and end handles, and drag them along the progress bar.

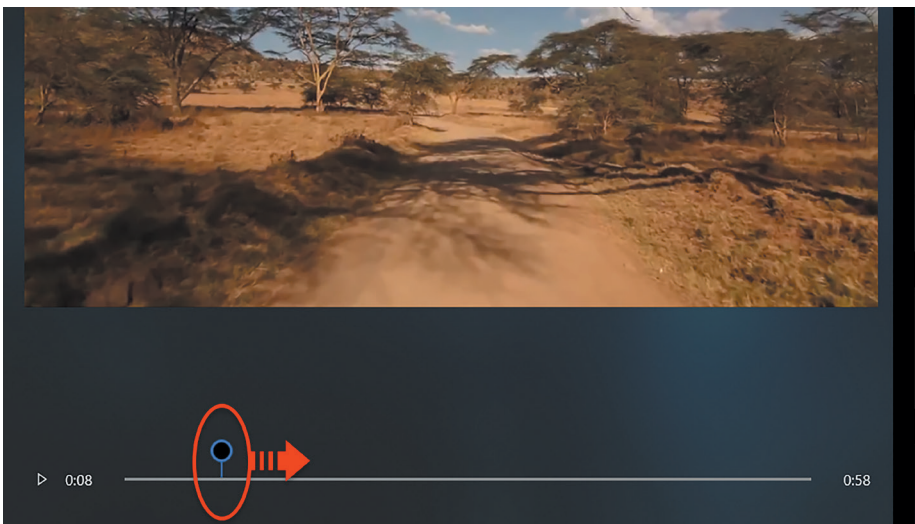
When you have added all the effects you want, click 'done' at the top right hand side of the screen.

Adding 3D Models

You can add 3D models to your videos. To do this, click '3D Effects'. You can add 3D models from Microsoft's Remix library or even your own models from Paint 3D.

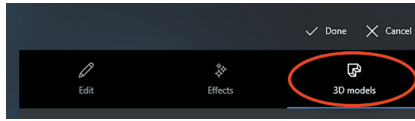


Scrub to the part of the footage you want the effect to appear, using the progress bar underneath your video preview.

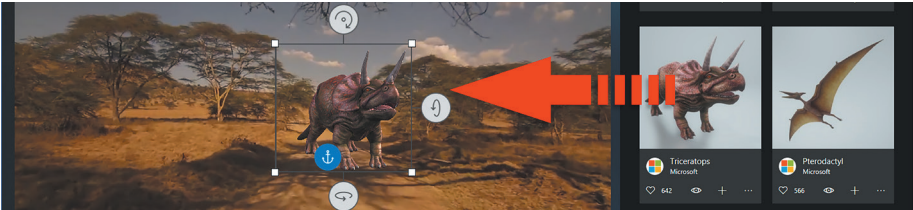


Legacy Photos App

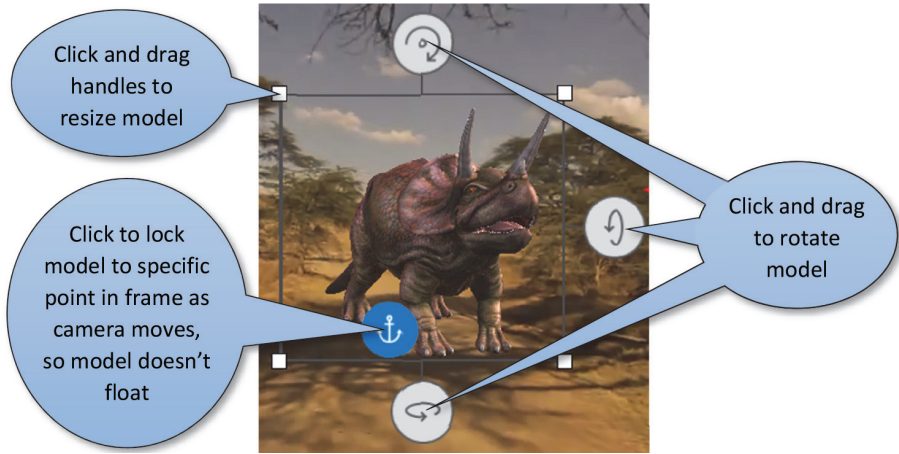
Select the '3D Models' icon on the top right to reveal the models panel, if they are not visible.



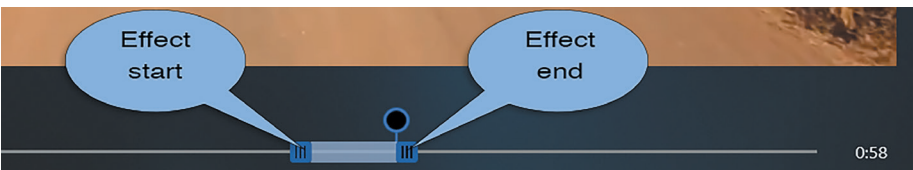
Browse through the models listed down the right hand side of the screen.



Drag and drop the model you want, onto the position you want it to appear in the video.

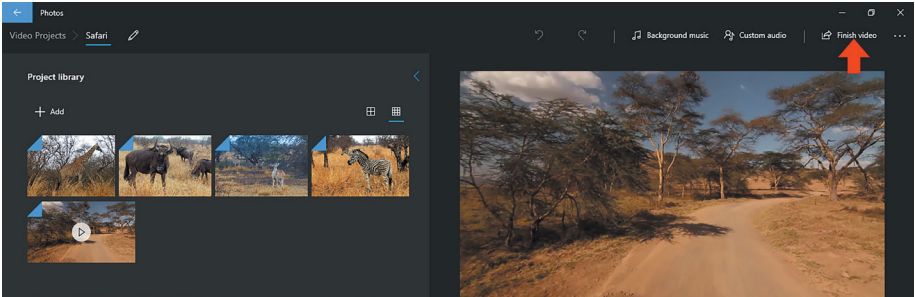


Use the handles to rotate, resize and position the model in the frame, as you would do for the effects we added earlier. Under the video preview window, adjust the length of time you want the model to remain on-screen. Use the beginning and end sliders as shown below. The black dot is where you are in the video, eg 58 seconds into the video clip.

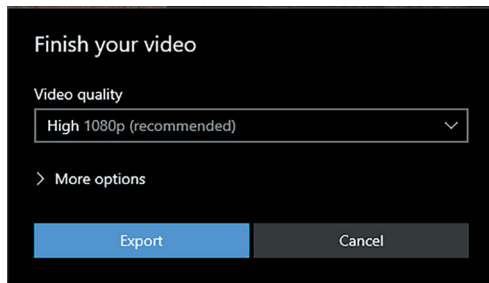


Export your Video

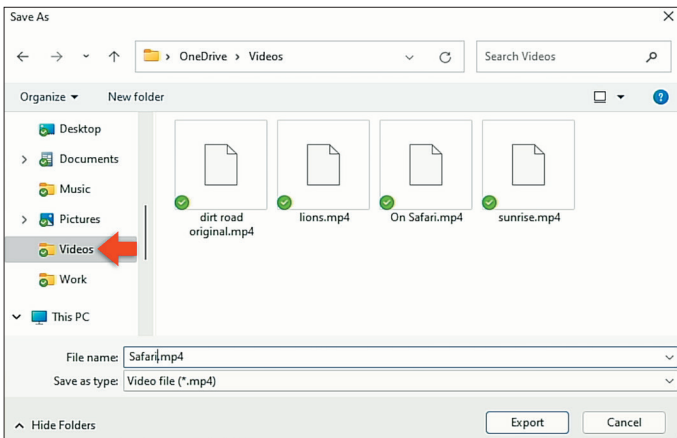
To export your finished video project, click 'finish video' on the top right of the screen.



This will allow you to save the video project as an mp4 video file. Select 'high 1080p' from the 'video quality' dialog box, then click 'export'.



Select your 'videos' folder on your computer. Give your video a meaningful name.



Click 'export'.